

厦门奥斯福电力系统有限公司

XIAMEN AOSIF ENGINEERING LTD

销售中心: 厦门市福厦路机场路口天丰机械城

电话: 0592-5741818 5742828

传真: 0592-5743006 邮编: 361009

厂址: 厦门市同安城南工业区霞金路

电话: 0592-7898600 传真: 0592-7898610

Http://www.AOSIF.COM.CN

E-mail:AOSIF@AOSIF.COM.CN

XIAMEN AOSIF ENGINEERING LTD

Distribution Center: Tianfeng Machinery City, Airport Crossing, Fuxia Rd,
Xiamen, P. R. China

Tel: 86+592-5741 818 5742 828

Fax: 86+592-5743 006 Zip Code: 361009

Add: Xiajin Rd., Chengnan Industrial Park, Tong-An District, Xiamen, P.R. China

Tel: 86+592-7898 600 Fax: 86+592-7898 610

Http://www.AOSIF.COM.CN

E-mail:AOSIF@AOSIF.COM.CN

本资料内容仅供参考, 不作交货依据, 不付法律责任

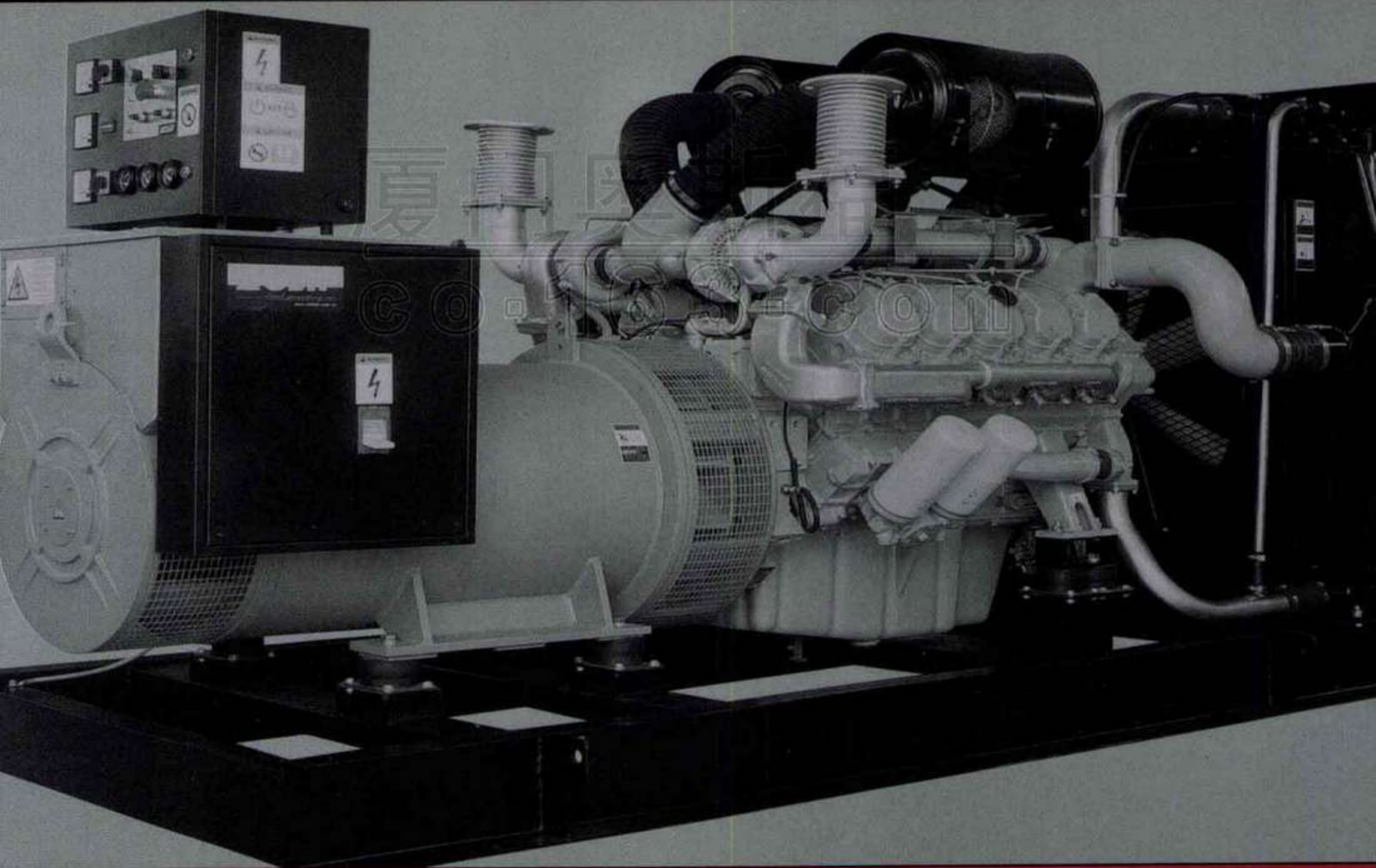
The information is only for purpose of reference instead
of evidence as delivery, and shall not be subject to legal responsibility

AOSIF

柴油发电机组

DIESEL GENERATOR SET

H t t p : / / w w w . A O S I F . C O M . C N



厦门奥斯福电力系统有限公司
XIAMEN AOSIF ENGINEERING LTD



柴油发电机组
DIESEL GENERATOR SET

目 录

Contents

公司简介 Company Profile

经营理念 Business Principle

资质业绩 Certificates and Honors

产品介绍 Products Introduction

英国珀金斯(劳斯莱斯)系列 England Perkins (Rolls-Royce) Power Series

韩国斗山(大宇)系列 Doosan-Daewoo Power Series

康明斯系列 Cummins Power Series

瑞典沃尔沃系列 Volvo Power Series

美国强鹿系列 Johndeere Power Series

德国曼MAN系列 Man Power Series

天津珀金斯、潍柴道依茨系列 TianJin Perkins (Rolls-Royce), Weifang Deutz Power Series

上柴动力系列 Shanghai Dongfeng Power Series

无锡万迪系列 Wuxi Wandl Power series

南通飞鲸(上海帕欧)系列 Nantong Feijiang (Shanghai Paou)Power Series

其它国产系列 Other Domestic Power Series

四川晨风系列 Sichuan Sunfull Power Series

船用柴油发电机组 Marine Diesel Generator Set

技术标准及电气性能 Technical Standards and Electrical Behavior

发电机简介 Brief Introduction to Generators

安装示意图 Scheme of Installation



厦门奥斯福电力系统有限公司是国内一家科技导向型企业,公司主要从事柴油发电机组、发电机及相关电气控制系统的专业制造和开发,注册商标“AOSIF”产品多品种、多系列、多规格,能满足客户之一切电力需求。

奥斯福电力系统采用国际著名品牌柴油机,包括:英国珀金斯(Perkins)、康明斯(Cummins)、美国强鹿(John deere)、德国曼(Man)、德国道依茨(Deutz)、韩国斗山大宇(Doosan-Daewoo)等;同时采用国内名优柴油机,包括:上柴“东风”、无锡“万迪”、南通“飞鲸”、济南“驰动”、四川“晨风”等。发电机采用利莱森玛(Leroy-somer)、斯坦福(Stamford)、马拉松(Marathon)等国际品牌的无刷式发电机。

奥斯福电力系统生产基地设在美丽、温馨的厦门经济特区,拥有现代化的生产厂房,使用国际一流生产、装配、检测设备,严格按照ISO9001质量管理体系执行,并引用目前最先进的3C计算机辅助技术,使“AOSIF”产品在设计、生产、检验等方面领先同行业。每台“AOSIF”机组都是以科学的装配工序组装成套后,经过严格的台架测试试验,检验合格方可出厂。

奥斯福电力系统拥有一批高科技专业技术人才,占公司员工总数80%以上,凭着专业知识和多年实践经验自行开发研制各系列自动化控制屏、自动电源切换柜(ATS)、全自动并机柜、市电并联系统,“三遥”远程监控自动化系统,率先采用中文图形人机界面,并实现微电子控制技术和现代化的网络通讯技术完美的结合。一流的装备、高素质的人才、长期实践的经验,加上ISO9001质量体系的管理控制,造就了奥斯福卓越的高品质产品和服务。

As a science & technology-orientated enterprise in China, Xiamen AOSIF Engineering Co., Ltd. specializes in the professional manufacturing and development of diesel generator sets, generators and related electrical control systems. Featured with multi-varieties, multi-series and multi-specifications, the products with the registered trademark "AOSIF" meet all the demands of our customers on power.

Our products not only adopt multitudinous international famous diesel engines including Perkins in England Cummins, Johndeere in U.S.A, Man in Germany, Deutz in Germany, Doosan- Daewoo in Korea and etc, but also use many excellent and well-known diesel engines in China including "Dongfeng" from Shanghai Diesel Engine Co., Ltd., "Wandi" from Wuxi Wandi Power Engineering Co., Ltd., "Feijing" from Nantong Diesel Engine Co., Ltd, "Chidong" from Jinan Diesel Engine Co., Ltd, "Sunfull" from CSR Ziyang Locomotive Works Diesel Engine Factory of Sichuan and etc. The generators are the worldwide famous brushless generators of such international brands as Leroy-somer, Stamford, Mrathon and etc.

Located at the beautiful and comfortable Xiamen Special Economic Zone, the production base is equipped with modern workshops, worldwide top-grade manufacturing, assembly and testing equipment. The base has strictly organized the process in accordance with the ISO9001 international quality management system, and introduced the most advanced 3C computer-aided technique to make the "AOSIF" products lead among its counterparts in those aspects of designing, manufacturing, inspection and etc. Each "AOSIF" unit is fabricated in accordance with the scientific assembling process and delivered only after it is subject to the strict bench test.

Based on a group of Hi-Tech professionals (more than 80% of overall employees) and expertise as well as years of practical experience, our company has self-developed multiple series of automatic control screens, automatic transfer switch (ATS), automatic parallel tank, power parallel system, and "three-remote" automatic remote-monitoring system, with the Chinese graphic human-computer interface, and achieved the perfect combination of the micro-electronic control technology and modern network communication technology. The top-grade equipment, high-quality talents, long-term practical and rich experience, as well as the management and control by the ISO9001 quality management system, forge foundation for the outstanding, high-quality products and services.





经营理念

Business Principle

用心制造/用心服务/成就高品质

Pay Attention to Fabricate/Provide Best Service/Forge the High-Quality

质量目标

Quality Objective

不断发现问题/解决问题/追求卓越

达成最大客户满意度。

Progressively Find Problems/Settle Problems/Pursue Excellence

To Achieve the Maximum Customer Satisfaction

企业宗旨

Enterprise Tenet

竭尽所能 创造价值

不断满足用户的需求。

Do Our Best to Create Value

To Progressively Satisfy the Requirements of Customers

企业目标

Enterprise Target

努力成为

一流电力系统的供应商。

Strive for Becoming Top-Grade Power System Supplier





资质证书及业绩 Certificates and Honors





云南省省级政府采购
项目验收及付款确认书

项目编号:	0120090109001	
项目名称(中文):	352 kv 输电线路工程	标段名称(中文): 352 kv 输电线路工程
合同名称:	352 kv 输电线路工程 352 kv 输电线路工程	
合同内容:	352 kv 输电线路工程 352 kv 输电线路工程	
合同金额:	¥10,000,000.00	合同金额: ¥10,000,000.00
合同期限:	自合同签订之日起至工程竣工验收合格之日止	合同期限: 自合同签订之日起至工程竣工验收合格之日止
合同地点:	云南省昆明市	合同地点: 云南省昆明市
合同标的:	352 kv 输电线路工程	合同标的: 352 kv 输电线路工程
合同标的数量:	1 项	合同标的数量: 1 项
合同标的单价:	¥10,000,000.00	合同标的单价: ¥10,000,000.00
合同标的总价:	¥10,000,000.00	合同标的总价: ¥10,000,000.00
合同标的税率:	0%	合同标的税率: 0%
合同标的税额:	¥0.00	合同标的税额: ¥0.00
合同标的合计:	¥10,000,000.00	合同标的合计: ¥10,000,000.00

www.163.com





奥斯福—英国珀金斯 (劳斯莱斯) 系列 AOSIF-England Perkins (Rolls-Royce) Power Series

英国珀金斯公司 (Perkins) 是世界三大独立品牌柴油机制造商之一,于1932年由英国企业家 Frank.Perkins 在英国彼得保罗 Peterborough 创建成立。至今70余年的生产历史,已为全球包括向克莱斯勒、福格森、威尔逊、JCB 等世界600多家大型设备制造企业的3000多种产品提供了1500万台理想动力,现拥有3个生产基地年产30,0000台、两个零件发布中心 (英国曼切斯特和新加坡) 及4000多个全球服务网点。珀金斯(Perkins)公司已经成为推动全球柴油及天然气发动机结构设计优化、制造技术精良的源动力。

Perkins is recognised as a world leader in the design and manufacture of industrial diesel engines throughout the world. People have come to trust Perkins power. We are proud of that trust, and are passionate in pursuit of the engine excellence that has always inspired it.

Today a large part of that trust is founded not only upon well-engineered reliable products, but also on the piece of mind provided by the huge global family of distributors and dealers backing them with parts and service.

奥斯福—英国珀金斯 (劳斯莱斯) 系列 AOSIF-England Perkins (Rolls-Royce) Power Series

机组型号 Model of Unit	柴油机型号 Model of Diesel Engine	常用功率 Prime Power	备用功率 Standby Power	燃油消耗率 Fuel Consumption	机油消耗率 Lubricating Oil Consumption	外形尺寸 Overall Dimension	重量 Weight		
TYPE	TYPE	KVA	KW	KVA	KW	< (g/KWh)	< (g/KWh)	(LXWXH)mm	(Kg)
AP10	403C-11G	9.1	7.3	10	8	252	0.63	1280X500X860	330
AP15	403C-15G	13.3	10.6	14.5	11.6	254	0.64	1280X500X950	390
AP23	404C-22G	20.3	16.3	22.7	18.2	243	0.61	1420X500X1000	550
AP33	1103A-33G	30	24	33	26.4	211	0.53	1520X650X1200	750
AP50	1103-33TG1	45	36	49.6	39.7	215	0.54	1520X650X1200	770
AP66	1103A-33TG2	60	48	66	52.8	220	0.55	1520X650X1200	770
AP72	1104A-44TG1	65	52	71.5	57.2	208	0.52	1800X650X1200	840
AP88	1104A-44TG2	80	64	88	70.4	208	0.52	1800X650X1200	850
AP110	1104C-44TAG2	100	80	110	88	208	0.52	1850X700X1300	1120
AP151	1006TAG	138	110	151	121	212	0.53	2250X800X1400	1200
AP165	1306-E87TG1	150	120	165	132	223	0.56	2300X900X1250	1350
AP179	1306-E87TG2	163	130	179	143	225	0.56	2350X900X1250	1400
AP193	1306-E87TAG1	174	140	193	154	214	0.54	2420X900X1250	1400
AP207	1306-E87TAG2	189	151	207	166	209	0.52	2420X900X1650	1450
AP229	1306-E87TAG3	208	166	229	183	209	0.52	2530X900X1650	1540
AP250	1306-E87TAG4	228	182	250	200	204	0.51	2530X900X1650	1540
AP258	1306-E87TAG5	235	188	258	206	206	0.52	2530X900X1650	1540
AP275	1306-E87TAG6	250	200	275	220	212	0.53	2530X900X1650	1540
AP400	2306C-E14TAG2	350	280	400	320	197	0.49	3300X1110X1800	2890
AP450	2306C-E14TAG3	400	320	450	360	201	0.50	3300X1110X1800	3020
AP500	2806C-E16TAG1	450	360	500	400	206	0.52	3500X1120X2020	3100
AP550	2806C-E16TAG2	500	400	550	440	205	0.52	3500X1120X2020	3230
AP625	2806C-E18TAG1	550	440	625	500	196	0.49	3500X1540X2100	3350
AP688	2806C-E18TAG2	625	500	688	550	198	0.50	3500X1540X2100	3520
AP715	2806C-E18TAG2	650	520	715	572	198	0.50	3500X1540X2100	3520
AP800	4006-23TAG2A	730	580	800	640	199	0.50	3820X1800X2150	4420
AP900	4006-23TAG3A	800	640	900	720	200	0.50	3820X1800X2150	4620
AP1125	4008TAG2A	1022	820	1125	900	206	0.52	4970X1800X2400	5550
AP1375	4012TWG2	1258	1000	1375	1100	205	0.52	4960X2260X2800	8510
AP1513	4012TAG1A	1375	1100	1513	1210	199	0.50	4960X2260X2900	8700
AP1650	4012TAG2A	1505	1200	1650	1320	201	0.50	4960X2260X3000	9000
AP1925	4016TAG	1752	1400	1925	1540	204	0.51	5900X2780X3350	13196
AP2028	4016TAG1	1844	1476	2028	1622	216	0.54	6000X2780X3540	13056
AP2263	4016TAG2	2058	1646	2263	1811	209	0.52	6000X2780X3450	13500

诚心诚意 为您服务
Sincere service for our customers

The product introduction

奥斯福—韩国斗山大宇系列
AOSIF-Doosan Daewoo Power Series

机组型号 Model of Unit	柴油机型号 Model of Diesel Engine	额定功率 Prime Power		备用功率 Standby Power		燃油消耗率 Fuel Consumption	外形尺寸 Overall Dimension	重量 Weight
TYPE	TYPE	KVA	KW	KVA	KW	< (g/KWh)	(LXWXH) mm	(Kg)
AD23	DC23	20	16	23	18	223	1400X650X1200	500
AD28	DC24T	25	20	28	22	223	1400X650X1200	550
AD34	DB33	30	24	34	27	223	2200X800X1450	850
AD50	P034TI	45	36	50	40	223	2300X800X1450	950
AD66	DB58	60	48	66	53	223	2600X900X1450	1100
AD96	D1146	88	70	96	77	223	2600X900X1450	1500
AD138	D1146T	125	100	138	110	202	2600X900X1450	1600
AD186	P086TI-1	169	135	186	149	203	2600x1000x1550	1750
AD220	P086TI	200	160	220	176	203	2600x1000x1550	1800
AD302	P126TI	275	220	302	242	201	3000x1200x1750	1950
AD344	P126TI-II	306	250	344	275	201	3000x1200x1750	1950
AD369	P158LE-2	338	270	369	295	205	3000X1200X1800	2400
AD413	P158LE-1	375	300	413	330	205	3200X1300X1800	2500
AD440	P158LE	400	320	440	352	205	3200X1400X1900	2600
AD495	P158LE-s	450	360	495	396	209	3200X1400X1800	3000
AD550	P180LE-s	500	400	550	440	209	3200X1400X1900	3200
AD633	P222LE-1	575	460	633	506	209	3350X1400X2000	3600
AD660	P222LE	600	480	660	528	209	3350X1400X2000	3600
AD688	P222LE	625	500	688	550	209	3350X1400X2000	3600
AD715	P222LE-S	650	520	715	572	209	3350X1400X2000	3600
AD800	P222LE-II	725	580	800	640	209	3450X1400X2000	3800

奥斯福—斗山大宇系列
AOSIF-Doosan Daewoo Power Series

韩国斗山(原韩国大宇)柴油机至今积累了先进的制造经验及技术,在韩国重工业领域的发展中居领先地位。其电站型柴油机24KW-54KW采用的是日本ISUZU技术,77KW-532KW采用的是德国MAN技术,其技术先进性居国际同行前列。

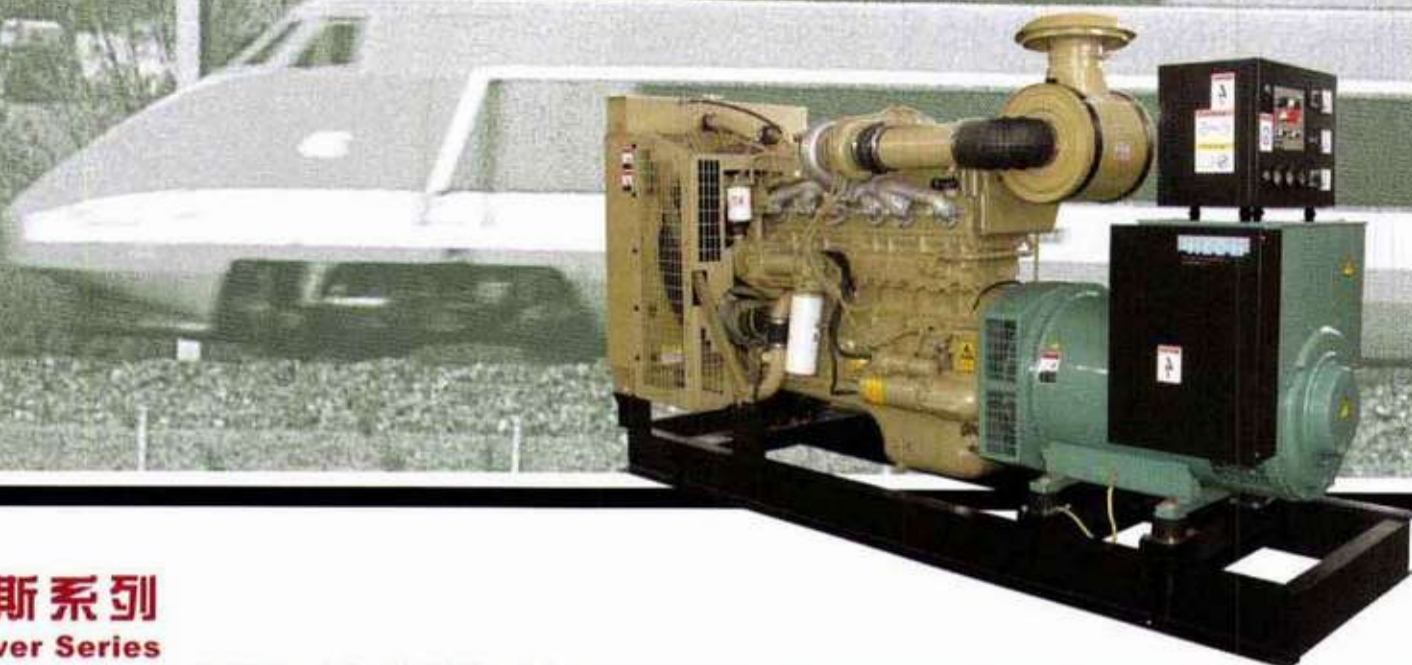
Based on the advanced manufacturing experience and technology, the Korea DOOSAN (former Korea DAEWOO) diesel engine is enjoying the leading development position in the Korean heavy industry field. Its generating station type diesel engine 24 kw-54 kw introduces the Japanese ISUZU technology while the 77 kw-53 kw adopts the German MAN technology. The company is among the enterprises which lead the world in the advanced technology.



DIESEL GENERATOR SET

AOSIF

3



奥斯福-康明斯系列 AOSIF-Cummins Power Series

康明斯发动机公司是世界上最大的柴油发动机制造公司，重庆康明斯发动机有限公司和东风康明斯发动机有限公司是美国康明斯在中国的合资企业，其产品的可靠性、技术的先进性均居世界前列。

CUMMINS Engine Corporation is the largest diesel engine manufacturing enterprise worldwide. The Chongqing CUMMINS Engine Co., Ltd. and the Dongfeng CUMMINS Engine Co., Ltd. are the joint venture enterprises invested by U.S.A CUMMINS in China. The reliability of its products and the advanced technologies are the leader of products and technologies.

奥斯福-东风康明斯系列 AOSIF-Dongfeng Cummins Power Series

机组型号 Model of Unit	柴油机型号 Model of Diesel Engine	额定功率 Prime Power		备用功率 Standby Power		燃油消耗率 Fuel Consumption < (g/KWh)	外形尺寸 Overall Dimension (LXWXH) mm	重量 Weight (Kg)
		KVA	KW	KVA	KW			
TYPE	TYPE							
AC55	4BTA3.9-G2	50	40	55	44	230	170x830x1300	1000
AC110	6BT5.9-G	100	80	110	88	230	2050x850x1600	1300
AC134	6BTA5.9-G	125	100	134	110	230	2100x850x1600	1350
AC134	6BTAA5.9-G	125	100	134	110	240	2100x850x1600	1350
AC165	6CTA8.3-G2	150	120	165	132	215	2300x850x1600	1600
AC206	6CTA8.3-G2	188	150	206	165	215	2300x850x1600	1600
AC220	6CTAA8.3-G	200	160	220	176	215	2600x850x1600	1750

奥斯福-重庆康明斯系列 AOSIF-Chongqing Cummins Power Series

机组型号 Model of Unit	柴油机型号 Model of Diesel Engine	额定功率 Prime Power		备用功率 Standby Power		燃油消耗率 Fuel Consumption < (g/KWh)	外形尺寸 Overall Dimension (LXWXH) mm	重量 Weight (Kg)
		KVA	KW	KVA	KW			
TYPE	TYPE							
AC275	NTA855-GA	250	200	275	220	230	3000x980x1800	3300
AC275	NTA855-G1	250	200	275	220	234	3000x980x1800	3300
AC303	NTA855-G1A	275	220	303	242	234	3000x980x1800	3300
AC344	NTS855-G2	313	250	344	275	217	3100x980x1800	3500
AC385	NTA855-G2A	350	280	385	308	234	3000x980x1800	3300
AC385	NTA855-G4	350	280	385	308	217	3200x980x1800	3900
AC413	NTAA855-G7	375	300	413	330	217	3300x1350x1900	3900
AC413	KTA19-G2	375	300	413	330	222	3400x1250x1900	4150
AC500	KTA19-G3	450	360	500	400	213	3400x1250x1900	4300
AC550	KTA19-G4	500	400	550	440	215	3500x1250x1950	4500
AC633	KTAA19-G5	575	460	633	506	215	3700x1250x1950	4700
AC660	KTAA19-G6	600	480	660	528	215	3700x1250x1950	4700
AC688	KTAA19-G7	625	500	688	550	215	3700x1900x2450	4800
AC700	KT38-G	625	500	700	560	232	4300x1900x2600	8000
AC825	KTA38-G2	750	600	825	660	225	4300x1700x2300	8500
AC963	KTA38-G2A	875	700	963	770	225	4300x1700x2300	8500
AC1100	KTA38-G5	1000	800	1100	880	192	4900x1900x2600	9000
AC1375	KTA50-G3	1250	1000	1375	1100	204	5400x1900x2600	10000

奥斯福-瑞典沃尔沃系列
AOSIF-Sweden Volvo Power Series

机组型号 Model of Unit	柴油机型号 Model of Diesel Engine	额定功率 Prime Power		备用功率 Standby Power		燃油消耗率 Fuel Consumption	外形尺寸 Overall Dimension	重量 Weight
TYPE	TYPE	KVA	KW	KVA	KW	< (g/KWh)	(LXWXH) mm	(Kg)
AV94	TD520GE	85	68	94	75	213	2200 × 720 × 1380	1050
AV110	TAD520GE	100	80	110	88	206	2200 × 720 × 1380	1150
AV144	TD720GE	130	104	144	115	211	2520 × 750 × 1400	1450
AV165	TAD720GE	150	120	165	132	197	2500 × 850 × 1350	1500
AV206	TAD721GE	188	150	206	165	204	2500 × 1000 × 1600	1550
AV220	TAD722GE	200	160	220	176	205	2500 × 800 × 1600	1600
AV303	TAD940GE	275	220	303	242	201	3000 × 1110 × 1600	2100
AV358	TAD941GE	325	260	358	286	202	3000 × 1110 × 1600	2300
AV412	TAD1241GE	375	300	413	330	198	3000 × 1120 × 1600	2700
AV438	TAD1242GE	400	320	438	350	198	3300 × 1120 × 1600	2800
AV500	TAD1640GE	450	360	500	400	194	3300 × 1110 × 1970	3000
AV550	TAD1641GE	500	400	550	440	198	3300 × 1110 × 1970	3100
AV625	TAD1642GE	563	450	625	500	200	3300 × 1110 × 1970	3500



奥斯福-瑞典沃尔沃系列
AOSIF-Sweden Volvo Power Series

Volvo Penta 是世界一流的生产船用和工业用发动机及全套动力系统的制造商，产品制造遍布全球。

Volvo Penta 提供带底架发动机的标准配置，方便运输，缩短生产时间，Volvo Penta 发动机具有运行经济，噪音低，排放少等优点。

Volvo Penta is a world-leading supplier of engines and complete power systems for marine and industrial applications.

When high reliability and durability are essential, Volvo Penta is the key to success. With engines providing excellent operating economy, low noise levels and low exhaust emissions, together with worldwide parts supply, support and service, Volvo Penta is the world leading supplier to independent generator set producers.

4

5



奥斯福—美国强鹿系列 AOSIF-JOHNDEERE Power Series

在零下的寒冬和炎热的夏天，能迅速启动和平稳运行的强鹿牌柴油机为您提供了可靠的备用动力。同时，优秀的燃油经济性和低维护成本设计，为您的常用动力带来了具有竞争优势的运营成本和超长的使用寿命。

世界著名的美国约翰·迪尔(John Deere)已经成为了全世界首屈一指的生产农用机械、工业设备和林业设备的跨国公司。约翰·迪尔(John Deere)并开始将卓越的强鹿牌柴油机提供给其他的主机厂和最终用户。

由于具有巨大的服务网络和零件分销系统，以及产品本身卓越的性能和品质，超凡动力的强鹿牌柴油机已经被广泛用于工业、农业、发电、船舶、汽车等用途。

In the freezing winter below 0oC and hot summer, the JOHNDEERE diesel engines, featured with quick start and stable operation, provide you the reliable standby power. At the same time, with the outstanding fuel economy and low maintenance cost design, the engines offer you the competitive operation cost and super-long service life for your common power.

The worldwide famous JOHNDEERE (U.S.A.) Corporation has become a superexcellent multinational company specialized in manufacturing the agricultural machinery, industrial equipment and forestry equipment. Now, JOHNDEERE starts to provide the other enterprises and end users with the excellent JOHNDEERE brand diesel engine.

Due to the large service network and part distribution system as well as the outstanding performance and high-quality products, the powerful JOHNDEERE diesel engine has been applied in industry, agriculture, electrical generation, ship, vehicle and other fields.

奥斯福—美国强鹿系列 AOSIF-JOHNDEERE Power Series

机组型号 Model of Unit	柴油机型号 Model of Diesel Engine	额定功率 Prime Power		备用功率 Standby Power		燃油消耗率 Fuel Consumption		外形尺寸 Overall Dimension (LXWXH) mm	重量 Weight (Kg)
		KVA	KW	KVA	KW	柴油 升/小时	机油 g/Kwh		
TYPE	TYPE								
AJ34	3029DF128	30	24	34	27	7.0	0.88	1500x700x300	630
AJ41	4039DF008	38	30	41	33	9.0	0.88	1750x700x1500	790
AJ69	4039TF008	63	50	69	55	14.5	0.88	1750x750x1500	900
AJ89	4045TF258	80	64	89	71	19.5	0.88	1750x750x1500	950
AJ113	6068TF158	103	82	113	90	23.0	0.88	2000x800x1550	1180
AJ131	6068TF258	119	95	131	105	26.0	0.88	2000x800x1550	1200
AJ165	6068HF158	150	120	165	132	33.0	0.88	2350x850x1600	1400
AJ206	6068HF258	188	150	206	165	40.8	0.88	2500x850x1600	1600
AJ220	6081HF001A	200	160	220	176	45.3	0.88	2900x1100x1900	2500
AJ275	6081HF001B	250	200	275	220	46.1	0.88	2900x1100x1900	2600
AJ344	6125HF070A	313	250	344	275	59.0	0.88	3000x1500x1900	3200
AJ385	6125HF070B	350	280	385	308	69.4	0.88	3000x1500x1900	3400
AJ440	6125HF070C	400	320	440	352	69.4	0.88	3000x1500x1900	3500

诚心诚意 为您服务
Sincere service for our customers

The product introduction

奥斯福—德国曼系列
AOSIF-German Man Power Series

机组型号 Model of Unit	柴油机型号 Model of Diesel Engine	功率 Power Output		燃油消耗率 Fuel Consumption	机油消耗率 Lubricating Oil Consumption	外形尺寸 Overall Dimension	重量 Weight
TYPE	TYPE	KVA	KW	< (g/KWh)	< (公升/小时)	(LXWXH) mm	(Kg)
AM275	D0836LE203	275	220	199	0.10	2600x1250x1550	3000
AM350	D2866LE201	350	280	195	0.11	3100x1300x1600	3400
AM400	D2866LE203	400	320	201	0.13	3200x1300x1650	3850
AM450	D2876LE201	450	360	209	0.13	3200x1300x1650	3900
AM500	D2876LE203	500	400	212	0.13	3300x1350x1700	4100
AM563	D2840LE201	563	450	196	0.13	3300x1400x1950	4300
AM625	D2840LE203	625	500	199	0.15	3300x1400x1950	4500
AM688	D2842LE201	688	550	195	0.42	3500x1600x1950	5000
AM750	D2842LE203	750	600	196	0.43	3500x1600x2200	5100
AM800	D2842LE213	800	640	206	0.45	3500x1600x2200	5200



奥斯福—德国曼MAN系列
AOSIF-German Man Power Series

德国曼是世界知名企业集团，MAN柴油发动机凭借卓越的可靠性、先进性和超长的寿命，在发动机行业占据着显著的地位。

The Man (Germany) Corporation is a worldwide famous enterprise group. Based on the outstanding reliability, advanced technology and super-long service life, the Man diesel engine play a prominent role on the engine industry.



DIESEL GENERATOR SET

AOSIF

奥斯福—天津珀金斯系列

AOSIF-Tianjin Perkins(RollsRoyce)Power Series

机组型号 Model of Unit	柴油机型号 Model of Diesel Engine	额定功率 Prime Power		备用功率 Standby Power		燃油消耗率 Fuel Consumption < (g/KWh)	外形尺寸 Overall Dimension (LXWXH) mm	重量 Weight (Kg)
		KVA	KW	KVA	KW			
TYPE	TYPE							
AP50	1004G	45	36	50	40	210	1650x800x1200	750
AP78	1004TG	70	56	78	62	205	1800x800x1200	800
AP100	1006TG1A	90	72	100	80	205	2000x800x1200	1000
AP110	1006TG2A	100	80	110	88	205	2000x800x1200	1050
AP150	1006TAG	138	110	150	120	205	2250x800x1300	1150

奥斯福—潍柴道依茨系列

AOSIF-Weifang Deutz Power Series

机组型号 Model of Unit	柴油机型号 Model of Diesel Engine	额定功率 Prime Power		备用功率 Standby Power		燃油消耗率 Fuel Consumption < (g/KWh)	外形尺寸 Overall Dimension (LXWXH) mm	重量 Weight (Kg)
		KVA	KW	KVA	KW			
TYPE	TYPE							
ADE34	D226B-3D	30	24	34	27	239	1650X650X1400	700
ADE55	TD226B-3D	50	40	55	44	228	1650X650X1400	760
ADE75	TD226B-4D	69	55	75	60	221	1890X650X1400	860
ADE110	TD226B-6D	100	80	110	88	227	2700X900X1490	1230
ADE150	TBD226B-6D	138	110	150	120	216	2700x900x1490	1290
ADE179	TBD226B-6D5	163	130	179	143	216	2750X900X1490	1360

奥斯福—天津珀金斯系列

AOSIF-Tianjin Perkins(Rolls-Royce)Power Series

珀金斯动力(天津)有限公司注册成立
于1997年5月,合资公司占地8.8万平方
米,生产车间占地2.3万平方米,设计具有
每年12万台的规模生产能力。秉承了珀金
斯悠久的历史 and 独到先进的生产技术,生
产多个系列的产品,各种产品可广泛的应
用于汽车、农业装备、工程机械、传播、
发电、建筑等各个领域。

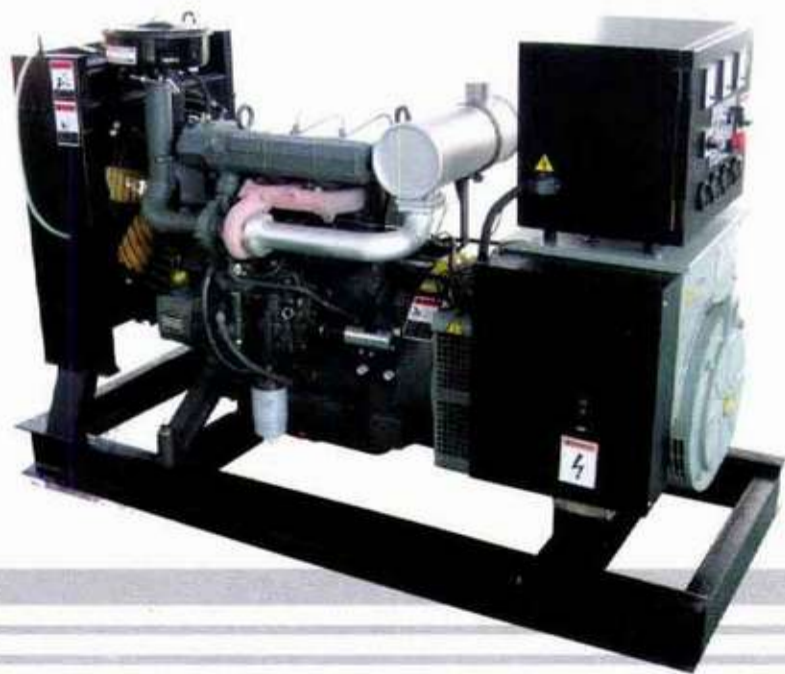
Perkins Engines (Tianjin) Co.,Ltd
was established in May of 1997. Our
company take up an area of 88,000 sq.
meters, with the workshop occupying
23,000 sq. meters. We can scale up to
a production capacity of 120,000 engines
per year. With Perkin Engine technology
from Britian, we have introduced an
extensive array of products, applicable
to the automotive, energy, agricultural,
and construction industries.

奥斯福—潍坊道依茨系列

AOSIF-Weifang Deutz Power Series

潍柴动力股份有限公司,是由潍坊柴油机厂作为主发起人联合境内
外投资者共同发起设立的符合现代企业制度的企业,是国家内燃机研
发、制造、销售重点骨干企业,是中国柴油机行业首家在香港上市
的公司(HK.2338)。其产品广泛应用于重型汽车、大客车、工程机械、
船用、发电等大功率动力配套市场。

Weichai Power Co.,Ltd. ("Weichai Power" or "the Company"),
is founded by Weifang Diesel Engine Factory together with domestic
and foreign investors. Weichai power is a modern enterprise as well
as the major enterprise in the PRC specializing in the research and
development, manufacturing and sales of diesel engines. The products
are widely applicable to different markets, including heavy-duty vehicles,
coaches, construction machines, vessels and power generator.



诚心诚意 为您服务
Sincere service for our customers



奥斯福-上柴东风系列 AOSIF-Shanghai Dongfeng Power Series

机组型号 Model of Unit	柴油机型号 Model of Diesel Engine	常用功率 Prime Power		备用功率 Standby Power		燃油消耗率 Fuel Consumption	机油消耗率 Lubricating Oil Consumption	外形尺寸 Overall Dimension	重量 Weight
TYPE	TYPE	KVA	KW	KVA	KW	< (g/KWh)	< (g/KWh)	(LXWXH) mm	(Kg)
ADF69	4135D-1	63	50	69	55	230	2.04	2200x800x1300	1500
ADF88	4135AD	80	64	88	70	230	2.04	2250x1120x1300	1520
ADF103	6135D-3	94	75	103	82	230	2.04	2600x1120x1500	1850
ADF110	4135AZD-1	100	80	110	88	230	2.04	2250x1120x1450	1850
ADF125	4135AZD	113	90	125	100	230	2.04	2250x1120x1450	1650
ADF138	4135AZD	125	100	138	110	230	2.04	2250x1120x1450	1650
ADF138	4135AZD-2	125	100	138	110	230	2.04	2260x1120x1450	1850
ADF138	6135AD	125	100	138	110	230	2.04	2650x1020x1450	1950
ADF165	6135JZD	150	120	165	132	230	2.04	2780x1020x1700	2150
ADF206	6135AZD-1	188	150	206	165	230	2.04	2925x1020x1700	2300
ADF225	G128ZLD	200	160	225	180	230	2.04	2750x1120x1700	2450
ADF250	G128ZLD2	225	180	250	200	230	2.04	2850x1120x1720	2500
ADF275	G128ZLD1	250	200	275	220	230	2.04	2900x1120x1720	2550
ADF344	12V135JZD	313	250	344	275	230	2.04	3300x1500x1950	3500
ADF375	12V135AZD	350	280	375	300	230	2.04	3300x1500x2000	3500
ADF438	12V135AZLD	400	320	438	350	230	2.04	3600x1600x2100	3600
ADF500	12V135BZLD	450	360	500	400	230	2.04	3800x1600x2200	3800

机组型号 Model of Unit	柴油机型号 Model of Diesel Engine	常用功率 Prime Power		备用功率 Standby Power		燃油消耗率 Fuel Consumption	机油消耗率 Lubricating Oil Consumption	外形尺寸 Overall Dimension	重量 Weight
TYPE	TYPE	KVA	KW	KVA	KW	< (g/KWh)	< (g/KWh)	(LXWXH) mm	(Kg)
ADF88	SC5D108D	80	64	88	70	230	2.0	1950x820x1200	1200
ADF103	SC5D122D	94	75	103	82	230	2.0	1950x820x1200	1250
ADF181	SC8D220D	163	130	181	145	230	2.0	2400x850x1380	1450

上柴卡特彼勒 American CAT Diesel Engine License Manufacturing

机组型号 Model of Unit	柴油机型号 Model of Diesel Engine	常用功率 Prime Power		备用功率 Standby Power		燃油消耗率 Fuel Consumption	机油消耗率 Lubricating Oil Consumption	外形尺寸 Overall Dimension	重量 Weight
TYPE	TYPE	KVA	KW	KVA	KW	< (g/KWh)	< (g/KWh)	(LXWXH) mm	(Kg)
ADF250	SC10C300D	225	180	250	200	230	2.0	2600x800x1500	2050
ADF275	SC10C350D	250	200	275	220	230	2.0	2700x1220x1600	2150

奥斯福-上柴东风系列 AOSIF-Shanghai Dongfeng Power Series

上海柴油机股份有限公司建厂50多年，依靠品种全、技术新、配套适应性好三大优势，彰显实力，它正朝着“建成中国最优秀的柴油机制造企业”的目标奋勇冲刺，迸发出驱动共和国工业长足发展的雷霆动力。

With more than 50 years of history since its establishment, Shanghai Diesel Engine Co., Ltd. has showed its powerful strength based on the complete varieties, state-of-the-art technologies, and good mating adaptability. Nowadays, this company is taking its courage and pushing towards the target of "Establishing the most outstanding diesel engine manufacturing enterprise in China", and bursting out the thunderclap-like power to drive the greater development of industries of China.

8



奥斯福—无锡万迪系列 AOSIF-Wuxi Wand Power Series

万迪集团无锡动力工程股份有限公司是我国研制生产柴油发动机的重点大型骨干企业。公司应用先进的内燃机核心技术改造135系列柴油机，形成了自己的特色和优势。

Wuxi Power Engineering Co., Ltd. of Wand Group is a key large pilot enterprise mainly specialized in developing and manufacturing the diesel engines. The company has applied the advanced core technology of internal-combustion engine to renovate the 135 series diesel engines, and formed its features and advantages.

奥斯福—无锡万迪系列 AOSIF-Wuxi Wand Power Series

机组型号 Model of Unit	柴油机型号 Model of Diesel Engine	常用功率 Prime Power		备用功率 Standby Power		燃油消耗率 Fuel Consumption	机油消耗率 Lubricating Oil Consumption	外形尺寸 Overall Dimension	重量 Weight
TYPE	TYPE	KVA	KW	KVA	KW	< (g/KWh)	< (g/KWh)	(LXWXH)mm	(Kg)
AWD125	WD129D11	113	90	125	100	232.6	2.04	2700x900x1480	2000
AWD138	WD129D11	125	100	138	110	232.6	2.04	2700x900x1480	2000
AWD165	WD150D15	150	120	165	132	228	2.04	2700x900x1500	2100
AWD206	WD129TD16	188	150	206	165	228.5	2.04	2700x900x1750	2200
AWD212	WD129TD17	188	150	212	170	232.6	2.04	2800x900x1750	2220
AWD225	WD129TD17	200	160	225	180	232.6	2.04	2850x1150x1750	2250
AWD245	WD129TAD19	225	180	245	196	228.5	2.04	2850x1150x1750	2320
AWD275	WD129TAD23	250	200	275	220	224	2.04	2950x1150x1750	2500
AWD275	WD258D22	250	200	275	220	230	2.04	3200x1400x1900	3100
AWD302	WD129TAD25	275	220	302	242	224	2.04	3200x1400x1900	3160
AWD330	WD129TAD25	300	240	330	264	224	2.04	3300x1400x1900	3200
AWD344	WD135TAD28	313	250	344	275	224	2.04	3300x1400x1900	3200
AWD344	WD240TD28	313	250	344	275	210	1.0	3150x1350x1900	3200
AWD388	WD258TD30	350	280	388	310	210	1.0	3250x1400x1900	3300
AWD400	WD258TD30	375	300	400	320	210	1.0	3250x1350x1900	3600
AWD440	WD269TD35	400	320	440	352	210	1.0	3300x1500x1950	3700
AWD500	WD269TAD38	450	360	500	400	208	1.0	3300x1600x1950	3800
AWD550	WD269TAD43-1	500	400	550	440	208	1.0	3650x1650x2150	3950
AWD605	WD269TAD45-L	550	440	605	484	208	1.0	3800x1700x2150	4200
AWD660	WD269TAD50	600	480	660	528	213.7	1.0	3850x1700x2250	4300

诚心诚意 为您服务
Sincere service for our customers

The product introduction

奥斯福-南通飞鲸(上海帕欧)系列 AOSIF- Nantong Feijing (Shanghai Paou)Power Series

奥斯福-南通飞鲸(上海帕欧)系列
AOSIF-Nantong Feijing (Shanghai Paou)Power Series

机组型号 Model of Unit	柴油机型号 Model of Diesel Engine	常用功率 Prime Power		备用功率 Standby Power		燃油消耗率 Fuel Consumption	机油消耗率 Lubricating Oil Consumption	外形尺寸 Overall Dimension	重量 Weight
TYPE	TYPE	KVA	KW	KVA	KW	< (g/KWh)	< (g/KWh)	(LXWXH) mm	(Kg)
AFJ124	6135AD	113	90	124	99	220	2	2600x8600x1500	2000
AFJ138	6135AD	125	100	138	110	220	2	2600x860x1500	2000
AFJ165	6135JZD	150	120	165	132	220	2	2620x860x1700	2100
AFJ206	6135AZD	188	150	206	165	220	2	2700x860x1700	2200
AFJ250	NT6135ZDRX	225	180	250	200	220	2	2800x1000x1750	2300
AFJ275	NT6135ZLDR2	250	200	275	220	220	2	2800x1100x1750	2450
AFJ302	NT6135ZLDU2	275	220	302	242	220	2	2900x1100x1750	2600
AFJ388	J12V135ZDA	350	280	388	310	218	2	3200x1300x1800	3000
AFJ412	J12V135ZDAX	375	300	412	330	218	2	3200x1300x1800	3200
AFJ440	NT12V135ZDH	400	320	440	352	218	2	3300x1400x1800	3500
AFJ481	NT12V135ZDHX	438	350	481	385	218	2	3400x1400x1800	3650
AFJ550	NT12V135ZLDH	500	400	550	440	218	2	3500x1500x1800	3900
AFJ605	NT12V135ZLDHX	550	440	605	484	218	2	3600x1550x1800	4100
AFJ660	NT12V135ZLDW	600	480	660	528	218	2	3700x1600x1900	4200
AFJ688	NT12V138ZLDW	625	500	688	550	218	2	3800x1600x1900	4300
AFJ750	T12V138ZLDW	681	545	750	600	218	2	3950x1700x2000	4500

南通柴油机股份有限公司创建于1958年,是南通市最早的机械企业之一,1993年由原南通柴油机厂改制为股份制公司,是集产品开发、生产、销售为一体的柴油机专业骨干企业。公司的主导产品是“飞鲸”、“富来威”牌135系列柴油机。通柴公司消化吸收N135先进技术,研制开发了NT系列160、168行程柴油机,以其长行程的独特设计填补了我国135柴油机行业的空白。

Nantong Diesel Engine Co.Ltd.(NDEC)is state large-scale enterprise, specially manufacturing FEIJING brand series 135 diesel engines. NDEC has taken the lead in technological equipment & manufacturing technology & product checking level in same field. At present, NDEC has absorbed the N135 advanced technology and successfully developed 160-stroke diesel engine, having filled the blank in the field of China 135 diesel engine by use of stroke-enlarged design method distinctively and has applied for state patent. NDEC has passed ISO9001 quality system authentication by quality authentication company of China Vess Class Society.



10

DIESEL GENERATOR SET

AOSIF



奥斯福—其它国产系列

AOSIF-Other Domestic Power Series

奥斯福发电机组与国内各大知名品牌发动机有着密切的合作，其优越性表现在品种齐全、经济可靠、维修方便、配件充裕。

The AOSIF generator unit is closely cooperating with the many domestic famous engines, and features with complete varieties, economical, reliable, ease to repair and abundant fittings.

上海拖拉机内燃机公司

Shanghai Tractor & Internal Combustion Engine Corporation

机组型号 Model of Unit	柴油机型号 Model of Diesel Engine	常用功率 Prime Power		备用功率 Standby Power		燃油消耗率 Fuel Consumption	机油消耗率 Lubricating Oil Consumption	外形尺寸 Overall Dimension	重量 Weight
TYPE	TYPE	KVA	KW	KVA	KW	< (g/KWh)	< (g/KWh)	(LXWXH)mm	(Kg)
ASH17	295AD	15	12	17	13.2	258.4	2.04	1400X600X910	520
ASH21	395AD	19	15	21	17	254.2	2.04	1640X650X980	650
ASH28	3100AD	25	20	28	22	254.2	2.04	1640X650X980	670

上海纽荷兰农业机械有限公司

Shanghai New Holland Agricultural Machinery Corp., Ltd.

机组型号 Model of Unit	柴油机型号 Model of Diesel Engine	常用功率 Prime Power		备用功率 Standby Power		燃油消耗率 Fuel Consumption	机油消耗率 Lubricating Oil Consumption	外形尺寸 Overall Dimension	重量 Weight
TYPE	TYPE	KVA	KW	KVA	KW	< (g/KWh)	< (g/KWh)	(LXWXH)mm	(Kg)
ANH34	495AD	30	24	34	27	251.6	2.04	1800X750X1020	780
ANH41	495AZD	38	30	41	33	251.6	2.04	1900X750X1170	850
ANH50	SNH4100ZD	45	36	50	40	242	2.04	2000X750X1170	900

济南柴油机股份有限公司

Jinan Diesel Engine Co., Ltd.

机组型号 Model of Unit	柴油机型号 Model of Diesel Engine	常用功率 Prime Power		备用功率 Standby Power		燃油消耗率 Fuel Consumption	机油消耗率 Lubricating Oil Consumption	外形尺寸 Overall Dimension	重量 Weight
TYPE	TYPE	KVA	KW	KVA	KW	< (g/KWh)	< (g/KWh)	(LXWXH)mm	(Kg)
ACD688	G6190ZLD	625	500	688	550	204	1.2	5600x1700x2400	7500
ACD688	Z8V190D2	625	500	688	550	213.5	2.7	5700x1720x2770	8000
ACD866	Z12V190B	788	630	866	693	209.4	1.6	5900x1720x2800	11000
ACD1000	Z12V190B	900	720	1000	800	209.4	1.6	5900x1720x2800	11000
ACD1100	Z12V190B	1000	800	1100	880	209.4	1.6	5900x1720x2800	12000
ACD1238	G12V190ZL	1125	900	1238	990	209.4	1.6	5900x1720x2800	12000
ACD1375	A12V190ZL	1250	1000	1375	1100	209.4	1.6	7800x2800x3000	18000
ACD1513	A12V190ZL	1375	1100	1513	1210	209.4	1.6	7800x2800x3000	18000
ACD2200	H12V190PZL	2000	1600	2200	1760	209.4	1.6	7800x2800x3100	19000

奥斯福—四川晨风系列
AOSIF-Sichuan Sunfull Power Series

机组型号 Model of Unit	柴油机型号 Model of Diesel Engine	常用功率 Prime Power		备用功率 Standby Power		燃油消耗率 Fuel Consumption	机油消耗率 Lubricating Oil Consumption	外形尺寸 Overall Dimension	重量 Weight
TYPE	TYPE	KVA	KW	KVA	KW	< (g/KWh)	< (g/KWh)	(LXWXH)mm	(Kg)
ASF1100	12V180ZD	1000	800	1100	880	220	2	5880x1700x2140	14000
ASF1250	6240ZD-C	1125	900	1250	1000	201	2	6500x1800x2668	22500
ASF1400	6240ZD-D	1250	1000	1400	1120	201	2	6500x1800x2668	22500
ASF2500	12V240ZD-C	2300	1840	2500	2000	200	2	7100x1950x3000	32000
ASF2750	12V240ZD-D	2500	2000	2750	2200	200	2	7100x1950x3000	32000
ASF3100	16V240ZD-B	2800	2240	3100	2480	199	2	8300x2100x3500	45000
ASF3400	16V240ZD-C	3100	2480	3400	2720	200	2	8300x2100x3500	45000
ASF3750	16V240ZD-D	3400	2720	3750	3000	201	2	8300x2100x3500	45000
ASF4600	16V280ZD-A	4150	3320	4600	3680	199	2	8800x2100x3500	53000
ASF5000	16V280ZD-G	4500	3600	5000	4000	200	2	8800x2100x3500	53000

备注:晨风柴油机除了12V180ZD额定转速为1500rpm,其余晨风柴油机额定转速均为1000rpm。

Remarks: All Sunfull series diesel engines is 1,000 rpm in rated speed, except that Model 12V180ZD diesel engine is 1,500 rpm.

奥斯福—四川晨风系列
AOSIF-Sichuan Sunfull Power Series

晨风柴油及燃气发动机是四川晨风动力科技有限公司与国内大型新造大功率机车及大功率柴油机的专业制造厂中国南车集团资阳机车厂共同推出的系列产品。柴油机功率范围从800kw至4200kw。

The Sunfull series diesel and gas engines are the series products introduced together by Sichuan Chenfeng Power Technology Co., Ltd. and CSR Ziyang Locomotive Works specialized in the manufacturing the newly high-power locomotives and high-power diesel engines in China. The power range of this series diesel engine is from 800 kw to 4,200 kw.



12



奥斯福-船用柴油发电机组 AOSIF-Marine Diesel Generator Set

奥斯福-上柴东风系列船用柴油发电机组选型表
Type Selection Table for AOSIF-Shanghai Dongfeng Power Series

机组型号 Model of Generator Set	CCFJ40J	CCFJ50J	CCFJ64J	CCFJ75J	CCFJ90J	CCFJ100J	CCFJ120J	CCFJ130J	CCFJ150J	CCFJ200J
柴油机型号 Model of Diesel Engine	4135Caf	4135ACaf	6135ACaf		6135JZCaf		6135JZLCaf		12V135ACaf	12V135JZCaf
额定功率KW Rated Power KVA/KW	40	50	64	75	90	100	120	130	150	200
额定电压V Rated Voltage V	400									
额定频率HZ Rated Frequency HZ	50									
功率因数 Power Factor	0.8									
额定转速r/min Rated Speed r/min	1500									
相数及接法 Number of Phase and Mode of Connection	三相四线制星形 3 phases and 4 wires, star connection (Y)									
启动方式 Starting Method	电启动 Electric starting									
外形尺寸LXWXHmm Outline Dimension L × W × H mm	1850X800X1380		2250X800X1300		2400X800X1280		2600X950X1580		2600X1350X1500	2750X1350X1500
重量kg Weight kg	1450	1450	1900	1950	2050	2180	2250	2900	3080	
12h功率燃油消耗率g/kw.h 12h Power Fuel Consumption Rate g/kw.h	< 228		< 225		< 221		< 223		< 226	

奥斯福-无锡万迪系列船用柴油发电机组选型表
Type Selection Table for AOSIF-Wuxi Wandi Power Series

机组型号 Model of Generator Set	CCFJ75J	CCFJ90J	CCFJ100J	CCFJ120J	CCFJ130J	CCFJ140J	CCFJ150J	CCFJ200J	CCFJ230J	CCFJ250J
柴油机型号 Model of Diesel Engine	X6135JCzf	X6140ACzf		X6135JZCzf	X6135JZCzf-2	X6135JZLwCzf	12V135ACaf	12V135ZCaf	12V135AZCaf	W12V135AZLwCaf
额定功率KW Rated Power KVA/KW	75	90	100	120	130	140	150	200	230	250
额定电压V Rated Voltage V	400									
额定频率HZ Rated Frequency HZ	50									
功率因数 Power Factor	0.8									
额定转速r/min Rated Speed r/min	1500									
相数及接法 Number of Phase and Mode of Connection	三相四线制星形 3 phases and 4 wires, star connection (Y)									
启动方式 Starting Method	电启动 Electric starting									
外形尺寸LXWXHmm Outline Dimension L × W × H mm	2285X843X1380	2265X843X1380	2365X843X1380	2650X955X1812			2580X1350X1460	2830X1300X1580	2780X1700X1780	2780X1800X1650
重量kg Weight kg	1950	2020	2150	2230	2280	2280	2900	3100	3350	3370
12h功率燃油消耗率g/kw.h 12h Power Fuel Consumption Rate g/kw.h	< 228.5	< 225		< 224.4	< 228.5	< 220	< 232.6			

特殊用途机组

Special-Purpose Unit



低噪声柴油发电机组

Low-Noise Diesel Generator Set

奥斯福低噪声发电机组是在普遍型或自动化型柴油发电机组的基础上增设设计先进的隔声罩，使机组噪声小于80dB(A)1m, 机组通过高效降噪型多路进排气、进排风通道，保证机组充足的动力性能，并采用大型阻抗复合式消音器，以确保噪声限值。

AOSIF low-noise diesel generator set is based on the normal or automatic diesel generator set and extended with the state-of-the-art noise enclosure to make the noise of the set less than 80dB(A)1m. The high-efficiency noise-reduction type multi-way air intake/exhaust channels and wind intake/exhaust channels ensure the sufficient power performance of the generator set. And the large-scale impedance combined type silencer is applied to ensure that the noise is less than the limit.



拖车式移动电站

Trailer Type Movable Station



车载式移动电站

On-vehicle Type Movable Station

14

控制系统

Control System

A 自动化控制柜

Automatic Control Switch

自动化控制柜实现以下功能

The Automatic Control Switch can implement the following functions

检测市电状况，自启动、自停机

手动、自动、遥控、程序启动、程序停机等多种运行方式供选择

自动监测油机工作状况，如油压低、油温高、水温高、超速、欠速等。

越限声光报警和保护停机，并具有启动失败报警。

标准RS458通信接口，实现机组远距离集中监控

The mains condition detection, self-start, and self-shutdown

Multiple operating modes are available for your selection, such as manual, automatic, remote control, program-controlled start, and program-controlled shutdown.

Automatically monitor the operating condition of oil engine, such as low oil pressure, high oil temperature, high water temperature, over-speed, under-speed and etc.

With the audio and visual alarming and protective shutdown, and the start failure alarming.

The standard RS458 communication interface can carry out the long-distance centralized monitoring of the set.

控制器

Controller

1. 采用工业用可编程控制器 (PLC)

1. Programmable Logic Controller (PLC)

功能特点:

Functional Characteristics:

核心程序逻辑管理油机系统资源

EPR0M(只读存储器)固化程序，使原程序长期不至丢失

PLC程序可修改，使油机自动控制更具有广泛适应性

抗干扰能力强，提供完善、可靠保护系统

标准PLC通讯功能实现油机近程或远程集中监控

The kernel program logic is available to manage the system resources of oil engine

The EPROM (Erasable Programmable Read Only Memory) is used to solidify program so as to make the original program stored for a long time

The PLC program can be modified to make the oil engine automatic control with wide-range adaptability.

Strong anti-interference capability available to provide a perfect, reliable protection system.

The standard PLC communication function is applied to carry out the short or long distance centralized monitoring of oil engine.

仪表配置:

Instrument Configuration:

电压表、电流表、频率表、油压表、水温表、计时器、电池电压或充电电流表、保护指示灯、转速及电压微调开关等。

Voltage meter, current meter, frequency meter, oil pressure meter, water temperature meter, timer, battery voltage or charging current meter, protection indicator, speed and voltage inching switch and etc.

2. 采用进口机组专用控制器

2. Imported Special Controller for Generator Set

功能特点:

Functional Characteristics

设计灵活、用户界面比较友好、大字符图形显示、操作简便等，适应各种发动机驱动的发电机组。

With the flexible design, user-friendly interface, large character graphic display, easy to operate and etc, which is available for the generator sets driven by various engines



实现功能:

Function Implemented:

A. 电网故障自动起停机控制。

B. 测量发电机电压、电流、无功、千瓦、频率、千瓦小时、运转时间、起机次数、故障处理次数、发动机工况参数并以先进LCD显示。

C. 保护功能:

发动机: 电瓶电压低、油压低、水温高、超速/欠速

发电机: 过压/欠压、超频/低频、过载、逆功、负荷不平衡、过电流、接地故障

D. 仪表配置: 电压表、电流表、频率表、转速及电压微调开关等。

E. 支持多语言显示。

F. 开关量输入及继电器输出可编程分配。

G. 带时钟的事件记录。

H. 可选的CANBUS总线、RS232/RS485通讯。

A. Mains failure automatic start/shutdown control.

B. Measure the generator volts, Amps, KVA, KW, frequency HZ, kwh, Hour, number of starting attempts, number of troubleshooting, parameters of engine operating condition, and display them on the advanced LCD display.

C. Protection function:

For engine: battery volt low, oil pressure low, water temperature high, over/under speed.

For generator: over/under volt, over/under generator frequency, overload, reverse power, load imbalance, over-current, and ground fault.

D. Instrument configuration: Voltage meter, current meter, frequency meter, speed and voltage inching switch and etc.

E. Support the multi-language display.

F. Digital input and relay output programmable distribution.

G. Event recorder with real time clock

H. CANBUS and RS232/RS485 optional.

电子调速器

Electronic Speed Regulator

AOSIF自动化机组都将机械调速柴油机改装为电子调速，使柴油机调速性能更好，油耗更低，性能更可靠，同时基于电子调速器超速保护上的双重保障，杜绝飞车。

For the AOSIF automatic generator set, the mechanical speed-regulating type diesel engines are refitted to the electronic type ones. It makes the diesel engine feature with the better speed-regulating performance, lower oil consumption, reliable capability. At the same time, based on the double protection measures of the electronic speed regulator on the over-speed protection, the runaway can be put end.

MCCB开关带自动保护装置

The MCCB switch is equipped with the self-protection device.

实现机组过载、短路、欠压、接地故障等电气保护

Carry out the electrical protection for the generator set, such as overload, short-circuit, under-voltage, ground fault and etc.

自启动柴油发电机组选用件(非标准供货范围)

Self-start diesel generator set optional (Non-standard configuration)

冷却水加热器 防潮器 油量表 水箱水位传感器

冷却液液位传感器 风扇皮带断裂报警开关

燃油、机油、冷却水供应系统

The cooling water heater, desiccator, oil gauge, radiator water level sensor

Coolant level sensor, fan belt breakage alarm switch

Fuel, oil, cooling water supply system

专业浮充电装置

Professional Floating Charge Device

自动检测蓄电池电压，调节充电电流大小，随时补充电池自放电损失，保证机组任一时刻起动所需电池电量。

Automatically detect the voltage of battery, regulate the charging current, and compensate for the self-discharging loss of battery at any moment to ensure that the generator set obtains the sufficient electric quantity of battery required whenever the generator set starts.



B

自动电源切换柜(ATS)

Automatic Transfer Switch (ATS)

可提供全系列“市电/备用”电源转换柜。这种技术方案具有以下特点：

★配置在靠市电输入端，只需要连接动力电缆，容易安装

★手/自动切换功能

★开关控制器采用单片机先断后合程序控制，逻辑程序、电气双重联锁。具有失压/欠压、缺相等电气保护，且具有很强的抗电磁干扰性能。

Provide the complete series "Mains/Standby" power automatic transfer switch. This technological solution has the following features:

★Configured to the mains input end so as to connect the power cable only, which is easy to install.

★Manual/Automatic switching function.

★The switch controller is subject to the SCM break-before-make program, with logic program, electrical double interlock. With the electrical protection such as over-/under- voltage, phase failure and etc, the controller features with the powerful anti-electromagnetic interference capacity.

控制系统

Control System

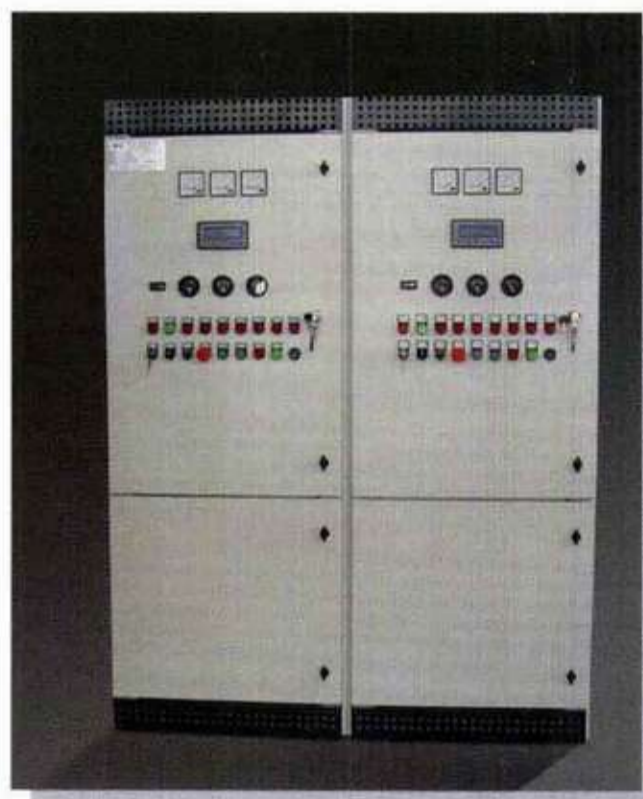
C 并机、并网系统 Parallel and Mains Parallel Systems

并机:

Parallel System:

有手动、自动、全自动3种选择方案。自动并联系统应用逻辑电路管理最多可控制32台发电机组自动并网运行,具有自动并联、负载均衡、负载调用、负载坡度之控制以防止运行发电机组超负载、逆功率保护等一系列功能。自动并联系统与手动并联系统相比较100%实现无人值守,大大减少现场操作人员人为误动作的发生。

Three solutions are available for you: manual, automatic and full-automatic. The automatic parallel system adopts the logic circuit management to control the automatic parallel operation of maximum 32 generator sets, with a series of functions such as automatic paralleling, load sharing, load transferring, load gradient control to avoid the overload of the generator set(s) operating, reverse power protection and etc. Compared with the manual parallel system, the automatic parallel system implements the 100% unattended operation and considerably reduce the occurrence of the misoperation caused by the field operator.



并网:

Mains Parallel System:

- 多功能先进数码并联控制系统 —Advanced multifunctional digital parallel control system;
- 负荷控制特性: 基载/消峰、输入/输出功率控制 —Load control characteristics: base load/peak reduction, input/output power control
- 同时控制发电机断路器和市电断路器, 可实现零切换效果 —Simultaneously control the generator breaker and mains breaker to get the zero switching effect.
- 手动/自动控制并联 —Manually/Automatically control the parallel.
- 数码显示电参数及发动机工况参数 —Digitally display the electric parameters and the parameters of engine operating condition
- 可选的CANBUS总线、RS232/RS485通讯, 实现三遥功能 —CANBUS and RS232/RS485 optional to obtain the "three-remote" function.

D 远程监控系统 Remote Monitoring System

具备实现自动化控制所需配置及各项功能。

系统可选的CANBUS总线、RS232/RS485通讯, 实现遥测、遥控、遥信三遥功能。

With the configuration and various functions to accomplish the automatic control.

CANBUS and RS232/RS485 optional to obtain the "three-remote" function, i.e. remote testing, remote controlling and remote communicating.

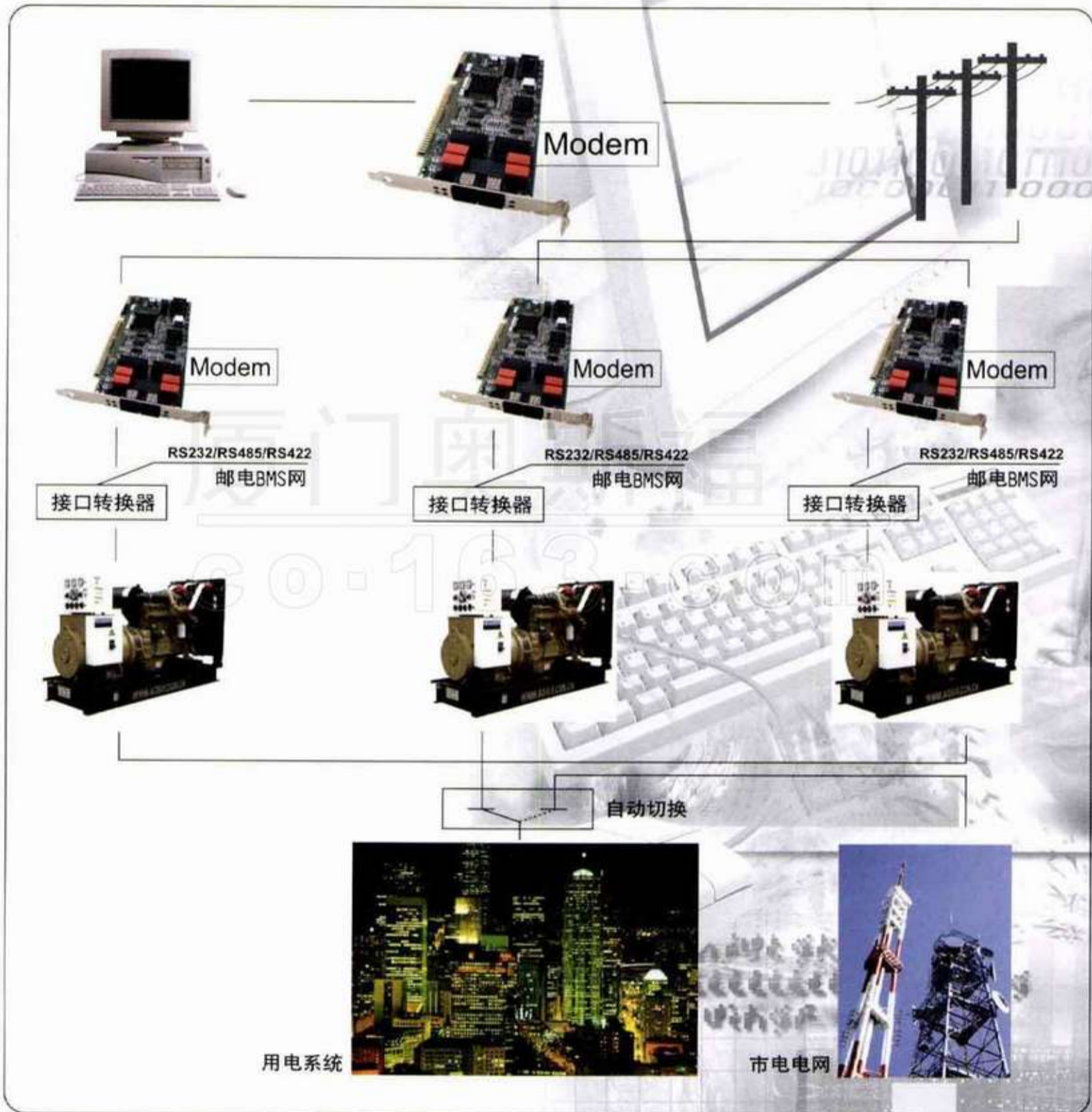
E 电脑网络监控系统 Computer Network Monitoring System

在远程监控系统上再配置互联网监控软件一套, 即可以将监控画面发布到互联网上, 从而实现在任何一部联网的计算机上经授权通过网络浏览器全面远程监控, 包括市电监测、油机各种工况参数或电力数据监测、并联系统监控、负载转换监控。该监控系统提供的控制平台方便操作者远程及时掌握机组工作状况、运行状况及报警等信息, 所有曲线、报表、实时数据等资料将储存在电脑里以供日后各层面分析, 有效提高管理效率。

网络监控系统全方位解决方案所需通讯硬件及中文版软件均由奥斯福电力系统提供。

The remote monitoring system is additionally configured with an internet software to release the monitoring picture to INTERNET. Here, you can use any computer access to internet to completely monitor the remote operations via the network browsers after you obtain the authorization, including the mains monitoring, various operating parameters of engine power data monitoring, parallel system monitoring, and load transfer monitoring. The control platform provided in the control system is convenient for the operator to know the working condition, operating condition, alarming and other information of remote generator sets. All curves, report forms, real-time data and other messages are stored in a computer for the future analysis at various level, which effectively improve the efficiency of management.

The communication hardware and Chinese version software necessary to the network monitoring system all-round solution are provided by the Xiamen AOSIF Engineering Ltd.



发电机组技术标准

Technical Standards of Generator Set

奥斯福发电机组符合国际ISO8528及国标GB/T2820-1997通用技术条件。

The AOSIF generator set conforms to the general specifications of ISO8528 and GB/T2820-1997.

发电机组电气性能

Electrical Behavior of Generator Set

额定电压: 400/230V
接线方式: 三相四线制
额定频率: 50HZ (60HZ 可选)
额定转速: 1500转/分 (1800转/分 可选)
功率因数: 0.8 (滞后)
电压波动率: < 0.5%
频率波动率: < 0.5%
Rated voltage: 400/230 V
Phases: 3 phases and 4 wires
Rated frequency: 50 Hz (60 Hz optional)
Rated speed: 1,500 rpm (1,800 rpm optional)
Power factor: 0.8 (lag)
Voltage fluctuation: < 0.5%
Frequency fluctuation: < 0.5%

电压调整率: 稳态 < ±1%
瞬态 < +20% - -15%
频率调整率: 稳态 < ±0-5% (可调)
瞬态 < ±10%
负荷突变恢复稳定时间: 电压 < 1秒
频率 < 5秒
波形失真率: < 5%
Voltage regulation: Steady < ±1%
Transient < +20% - -15%
Frequency regulation: Steady < ±0-5% (adjustable)
Transient < ±10%
Stability recovery time of sudden load change: Voltage < 1 s
Frequency < 5 s
Distortion of the fluctuant figuration: < 5%

发 电 机

Generator

奥斯福发电机组所配套的发电机根据不同机型、不同用户需求可选配利莱森玛 (LEROY-SOMER)、斯坦福 (STAMFORD)、马拉松 (MARATHON) 等无刷励磁发电机。

利莱森玛 (LEROY-SOMER) 发电机

- ★ 利莱森玛是世界著名跨国企业集团艾默生的全资子公司, 具有近百年历史的发电机制造经验;
- ★ 2/3绕组节距使发电机达到最佳运行性能;
- ★ 法国原装AVR自动电压调节器, 有突加载缓冲功能;
- ★ 可选的PMG励磁系统具有永久磁铁励磁功能;
- ★ 防护等级IP23;
- ★ 绝缘等级H级。

斯坦福 (STAMFORD) 发电机

- ★ 配带高效、先进的AVR自动电压调节器, 确保输出电压稳定, 同时能防潮、防沙、防盐及防振动;
- ★ 任选的永磁发电机 (PMG) 可给励磁系统独立供电;
- ★ 所有定子线圈为2/3节距, 可抑制过大的中线电流;
- ★ 防护等级IP22;
- ★ 绝缘等级H级。

马拉松 (MARATHON) 发电机

- ★ 无刷励磁, 配有固态电子调压器或免维护的数字式调压器, 调压精度高;
- ★ 带有永磁发电机 (PMG) 励磁系统的发电机能提供300%额定短路电流维持10秒;
- ★ 整体式凸极转子, 阻尼绕组与转子铁心成为一体, 磁场绕组用热固性环氧填充, 有较高的机械和电气强度;
- ★ 发电机为全防护结构, 内部通风散热结构独特, 散热好, 热差小, 温升低;
- ★ 防护等级为IP21、IP22或IP23 (可选);
- ★ 绝缘等级H级。

The generator provided for the AOSIF generator set can adopt the brushless self-excitation generators such as LEROY-SOMER, STAMFORD, MARATHON and etc, in accordance with the various models and/or the requirements of different customers.

LEROY-SOMER Generator

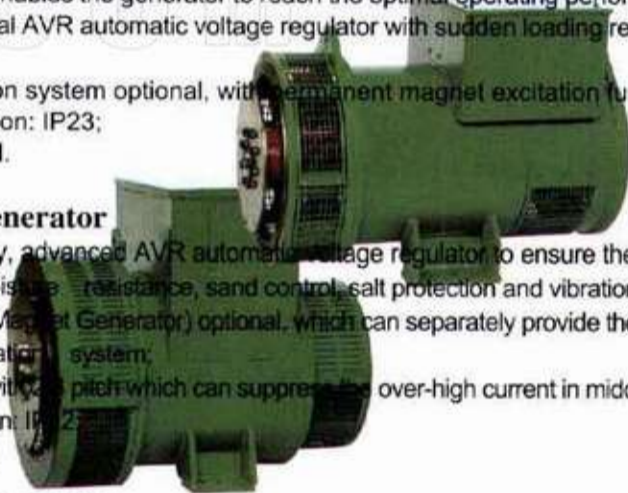
- ★ LEROY-SOMER Corporation is the sole subsidiary of EMERSON Corporation, a worldwide famous multinational enterprise group, with near century years of generator manufacturing experience;
- ★ 2/3 winding pitch enables the generator to reach the optimal operating performance;
- ★ With French original AVR automatic voltage regulator with sudden loading reduction function;
- ★ PMG self-excitation system optional, with permanent magnet excitation function;
- ★ Degree of protection: IP23;
- ★ Insulation class: H.

STAMFORD Generator

- ★ With high-efficiency, advanced AVR automatic voltage regulator to ensure the output voltage steady, moisture resistance, sand control, salt protection and vibration proof;
- ★ PMG (Permanent Magnet Generator) optional, which can separately provide the power supply for the excitation system;
- ★ All stator coils are with 2/3 pitch which can suppress the over-high current in middle wire;
- ★ Degree of protection: IP22;
- ★ Insulation class: H.

MARATHON Generator

- ★ Brushless excitation, equipped with solid state electronic voltage regulator or digital high voltage controller, high voltage regulating accuracy;
- ★ The generator equipped with PMG excitation system can provide 300% of rated short-circuit current for 10 s;
- ★ With the monobloc type salient pole rotor in which the amortisseur winding and rotor core become one unit, field winding is filled with thermoset epoxy material, with higher mechanical and electrical strength;
- ★ The engine is a full-protective mechanism, with a unique interior ventilation and heat emission structure featuring with better heat emission, lower heat difference and temperature rise;
- ★ Degree of protection: IP21, IP22 or IP23 (optional);
- ★ Insulation class: H.



安装示意图

Scheme of Installation

